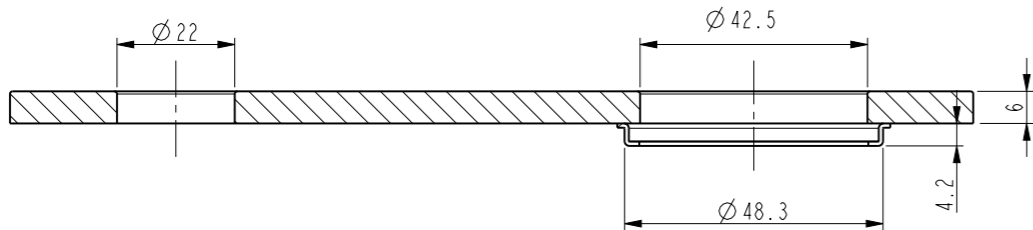




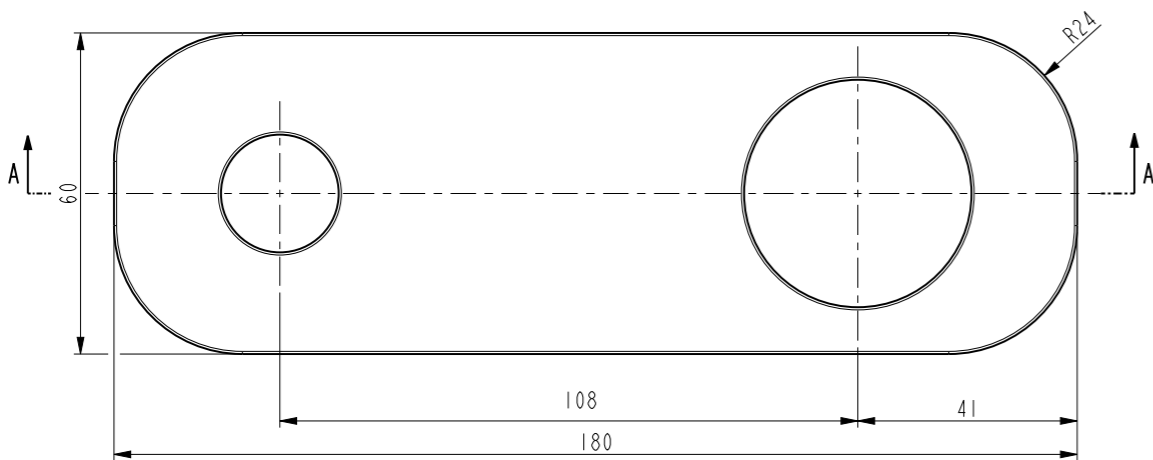
# ROUNDED RECTANGLE MIXER SPOUT & BACKPLATE

## INSTALLATION GUIDE

Note: This product must be installed by a licensed tradesperson.  
This is a general installation guide - there are many factors that are  
involved that can alter the installation method.



A - A



### SPECIFICATIONS

#### RECOMMENDED USE

Domestic

#### COLOUR AVAILABILITY



#### WARRANTY

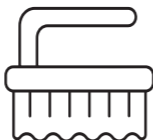
Structure: 25 years | Finish: 5 years



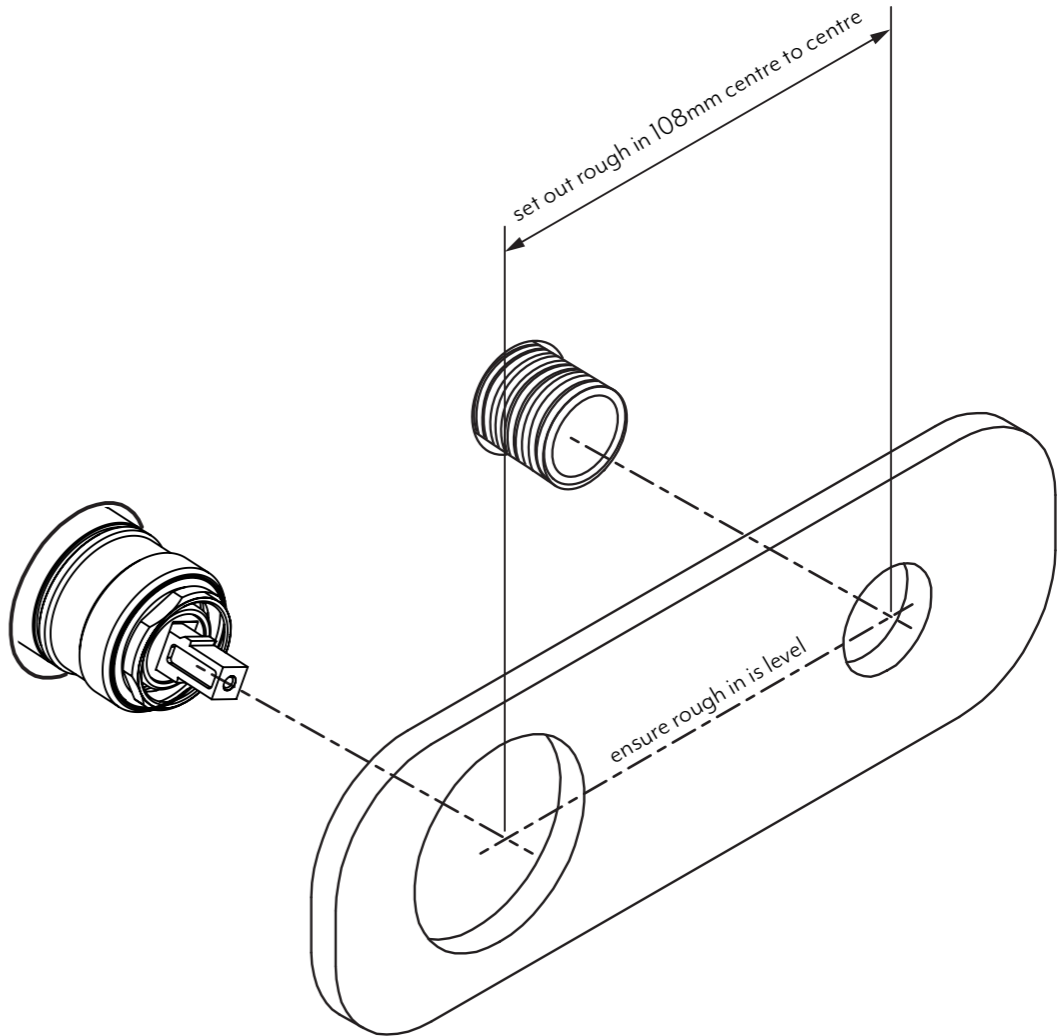
Regularly clean with  
mild liquid detergent  
or soap and water



DO NOT use cream  
cleaners or bleach.  
These substances are  
abrasive



DO NOT use cleaning  
pads with abrasive  
surfaces as this may  
scratch the material





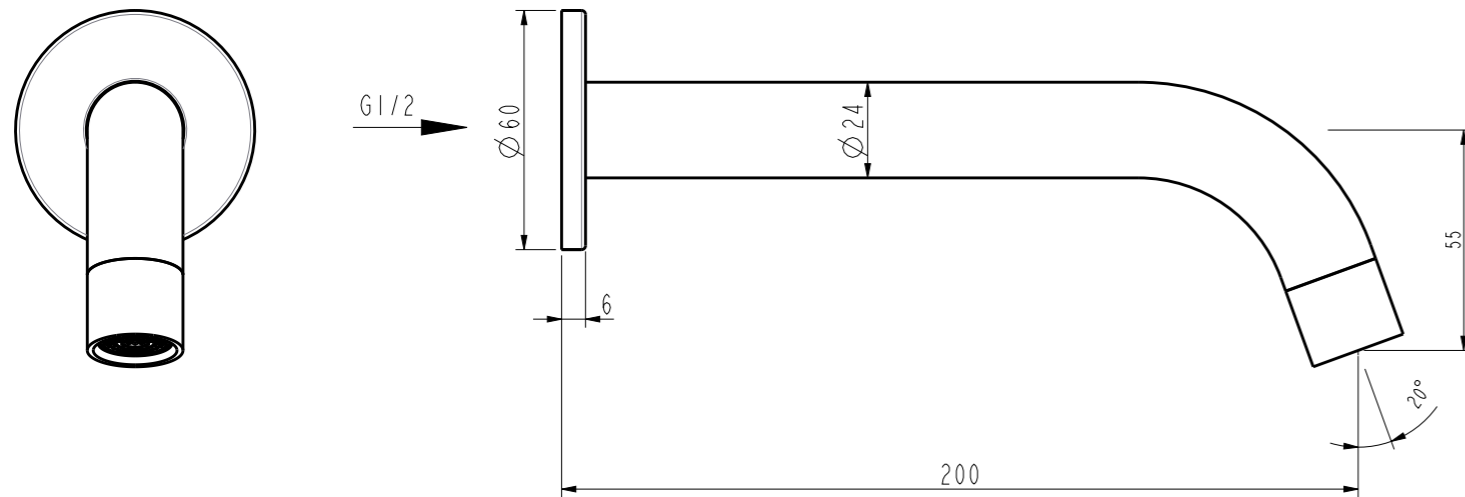
# WALL MOUNTED SPOUT



# WALL MOUNTED SPOUT

## INSTALLATION MANUAL

This product must be installed by a licensed plumber



### SPECIFICATIONS

#### RECOMMENDED USE

Domestic

#### COLOUR AVAILABILITY



#### CONSTRUCTION

Solid Brass

#### FINISH / COATING

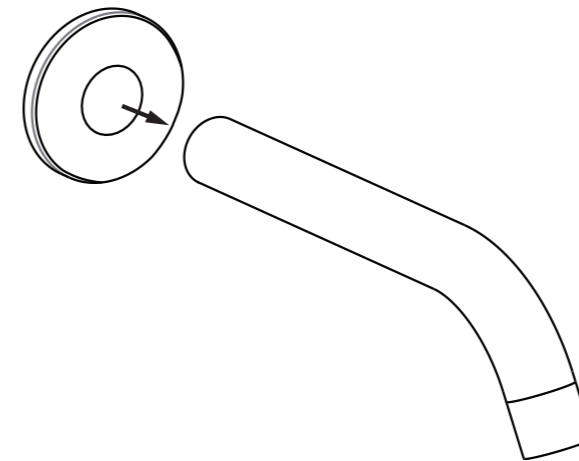
ABI's Heat Shield – Industrial Grade PVD Electro Colouring System

#### WARRANTY

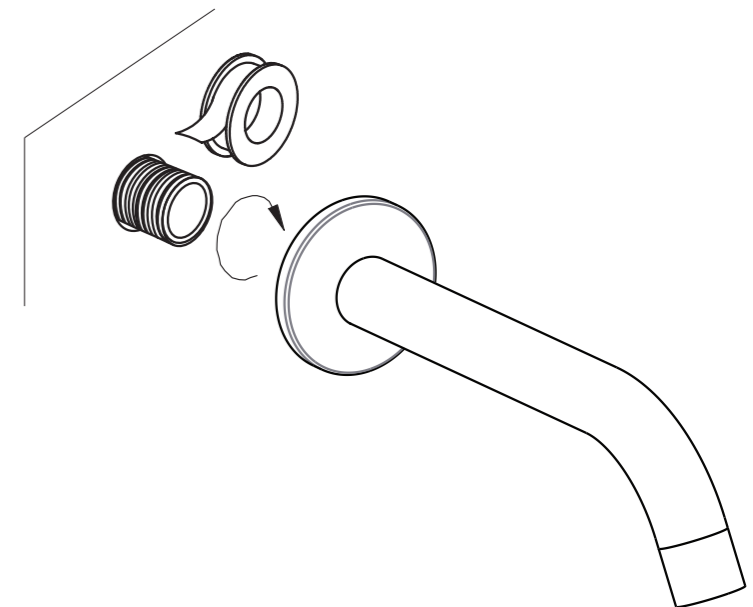
Structure: 25 years | Finish: 5 years

Disclaimer: Products in this specification manual must by regulation be installed by licensed and registered trade people. The manufacturer/distributor reserves the right to vary specifications or delete models from their range without prior notification. Dimensions are nominal measurements only. Dimensions and set-outs listed are correct at time of publication however the manufacturer/distributor takes no responsibility for printing errors. All ABI Products are designed in Australia. Copyright ABI Interiors 2019. WWW.ABIINTERIORS.COM.AU

- 1 Slide the back plate onto the spout - make sure that the rubber is firmly in place to protect the spout and stop the back plate from moving around



- 2 Apply the teflon tape to the brass nipple. Twist the spout on and hand tighten.



Regularly clean with mild liquid detergent or soap and water

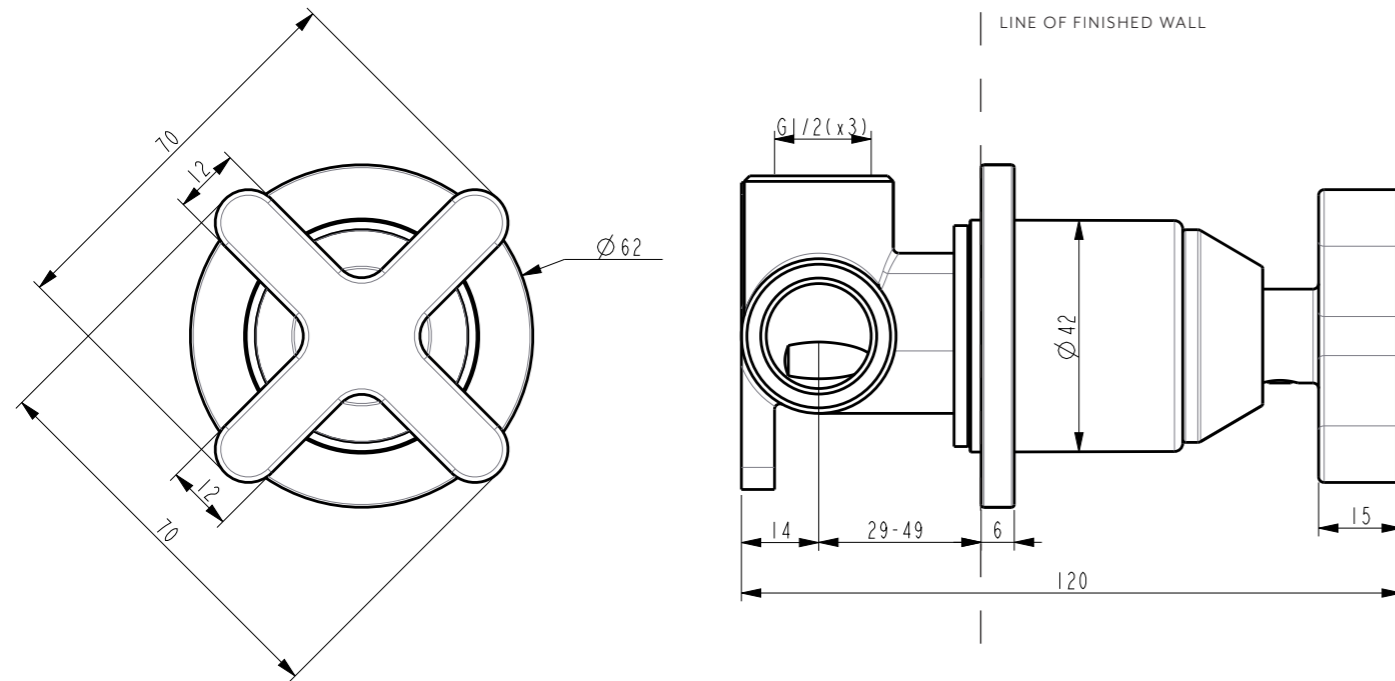


DO NOT use cream cleaners or bleach. These substances are abrasive



DO NOT use cleaning pads with abrasive surfaces as this may scratch the material

## PROGRESSIVE CROSS SHOWER MIXER



### SPECIFICATIONS

#### RECOMMENDED USE

Domestic

#### COLOUR AVAILABILITY



#### PRESSURE RATING

Recommended minimum working pressure 150kPa  
Recommended maximum working pressure 500kPa  
Hot and cold water inlet pressure should be equal

#### TEMPERATURE RATING

Maximum continuous working temperature 75°C  
If the water temperature exceeds 75°C, an approved tempering valve must be fitted

#### SUITABLE HOT WATER UNITS

Storage tank: Yes  
Continuous Flow: Yes  
Gravity Feed: Not suitable

#### STANDARDS

WELS Star Rating(5 Star) – Nominal Flow Rate(5.5 L/M)  
Registration No.(T32356)

#### WARRANTY

Structure: 25 years | Finish: 5 years | Cartridge: 10 years

Disclaimer: Products in this specification manual must by regulation be installed by licensed and registered trade people. The manufacturer/distributor reserves the right to vary specifications or delete models from their range without prior notification. Dimensions are nominal measurements only. Dimensions and set-outs listed are correct at time of publication however the manufacturer/distributor takes no responsibility for printing errors. All ABI Products are designed in Australia. Copyright ABI Interiors 2019. WWW.ABIINTERIORS.COM.AU

## INSTALLATION MANUAL

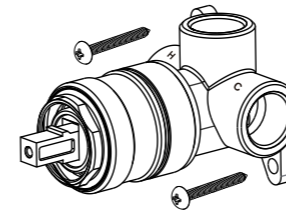
### PLEASE READ BEFORE INSTALLING

FLOW RESTRICTOR TO BE INSTALLED WHEN USING THIS PRODUCT OVER A BASIN AND PAIRED WITH A SPOUT.

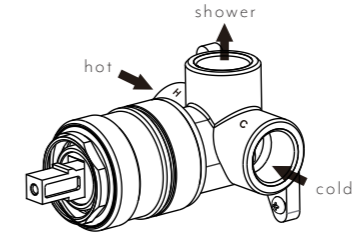
FLOW RESTRICTORS ARE PROVIDED WITH THE SPOUT

This product must be installed by a qualified plumber.

- ① Fasten screws to secure the shower mixer assembly in place.

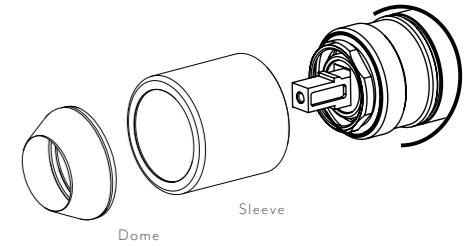


- ② Attach water supply and water outlet. TEST AND CHECK FOR LEAKS



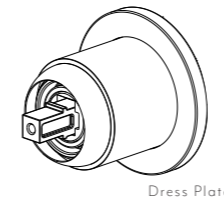
- ③ Create a 45mm round hole in cement sheet and tiles

Push the sleeve over the body until it is as far back as possible.  
Screw the dome onto the brass fitting and tighten

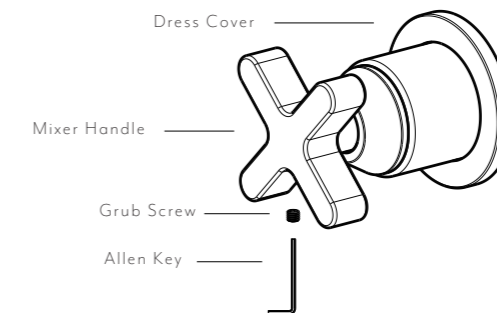


*\*Please ensure that the hole is big enough to allow for the sleeve to slide on at fit-off stage\**

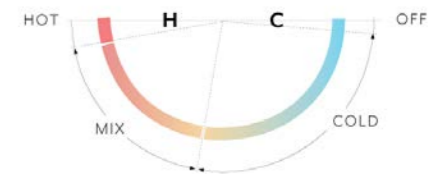
- ④ Assemble the plate and fix it in place.



- ⑤ Place the handle onto the fitting. Fasten the grub screw firmly with the allen key



#### PROGRESSIVE MIXER OPERATION

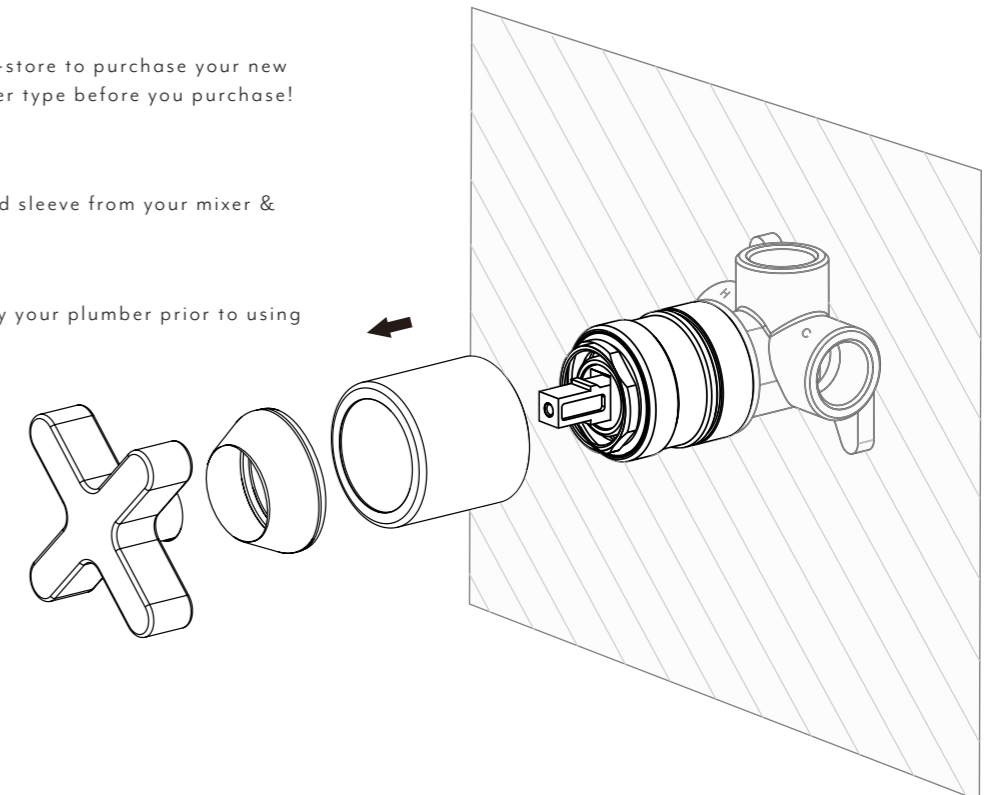


## HOW TO CUSTOMIZE YOUR MIXER

STEP 1: Visit our online shop or go in-store to purchase your new Handle Kit - Be sure to check the mixer type before you purchase!

STEP 2: Remove the handle, dome and sleeve from your mixer & repeat steps above for installation!

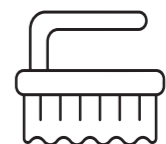
STEP 3: Be sure to get this checked by your plumber prior to using



Regularly clean with mild liquid detergent or soap and water



DO NOT use cream cleaners or bleach. These substances are abrasive



DO NOT use cleaning pads with abrasive surfaces as this may scratch the material