

**Note:** Dimensions are nominal measurements only



**Disclaimer** \* This product is designed to be used with wall mounted tapware

## SPECIFICATIONS

### RECOMMENDED USE

Domestic

### COLOUR AVAILABILITY



### TEMPERATURE RATING

Maximum continuous working temperature 75°C  
If the water temperature exceeds 75°C, an approved tempering valve must be fitted

### WARRANTY

Structure: 25 years | Finish: 5 years

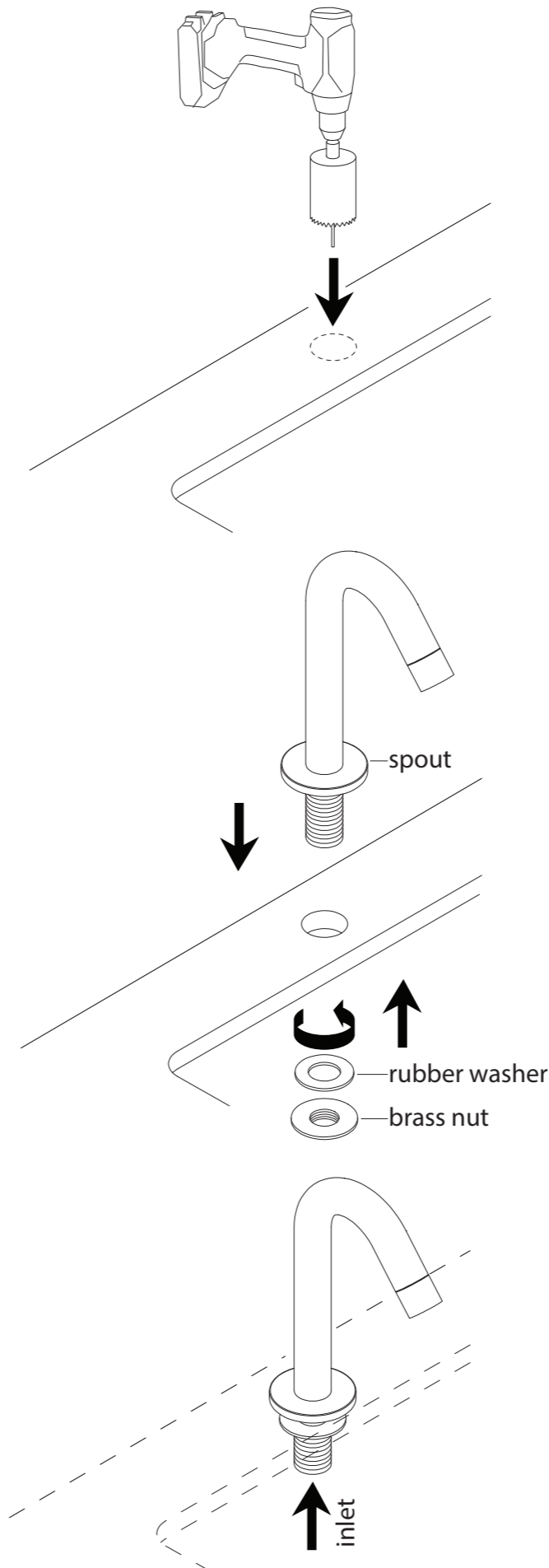
### WELS

WELS Star Rating(5Star) - Nominal Flow Rate(5.5 L/M)  
Registration No.(T36587)  
5 star, 5.5 L/min

Disclaimer: Products in this specification manual must by regulation be installed by licensed and registered trade people. The manufacturer/distributor reserves the right to vary specifications or delete models from their range without prior notification. Dimensions are nominal measurements only. Dimensions and set-outs listed are correct at time of publication however the manufacturer/distributor takes no responsibility for printing errors. All ABI Products are designed in Australia. Copyright ABI Interiors 2019. WWW.ABIINTERIORS.COM.AU

## INSTALLATION GUIDE

Note: This product must be installed by a licensed plumber.  
This is a general installation guide - there are many factors that are involved that can alter the installation method.



- 1 Mark out desired location of spout.  
Cut hole using a **25mm** hole saw.  
**Note:** If cutting a stone benchtop it will need to be cut in a controlled environment by a licensed tradesperson as per OH&S regulations.

- 2 Fix spout to benchtop with brass nut ensuring rubber washer is fitted to underside of benchtop.

- 3 Connect pipework to inlet of spout.

